

CITY OF BURTON

Transportation Plan



Image by Visit Brenham Texas

TABLE OF CONTENTS

Introduction.....	7
Existing Conditions.....	9
Functional Classifications.....	10
Annual Average Daily Traffic.....	12
Modes of Transportation.....	14
Existing Transportation Facilities.....	14
Sidewalks and Bikeways.....	14
Multimodal and Mobility Gap Analysis.....	15
Limited Pedestrian Facilities.....	15
Traffic Control.....	15
Crash Analysis.....	16
Crash Severity.....	18
Planned Improvement Projects.....	20
Thoroughfare Plan.....	21
Public Engagement.....	24
Major Themes.....	24
Safety Concerns.....	24
Pedestrian Facilities.....	24
Congestion and Traffic.....	24
Recommendations.....	25
Goal 1: Improve Road Safety For All Users.....	25
Objective 1.1: Community Visibility.....	25
Objective 1.2: User Protection.....	25

TABLE OF CONTENTS

Objective 1.3: Regional Collaboration.....	26
Objective 1.4: Conflict Point Reduction.....	26
Goal 2: Improve Community Mobility.....	27
Objective 2.1: Intersection Accessibility.....	27
Objective 2.2: Sidewalk Network.....	27
Objective 2.3: Shared-Use Paths.....	27
Objective 2.4: Connectivity.....	27
Goal 3: Establish a Multi-Modal Network.....	28
Objective 3.1: School Transportation Efficiency.....	28
Objective 3.2: Regional Freight and Trucking Paths.....	28
Objective 3.3: Event & Peak-Hour Management.....	28
Implementation Tables.....	29
Responsible Party Key.....	29
Grant Opportunities.....	33
Federal Funding Resources.....	33
Safe Routes to School.....	33
Safe Streets and Roads for All (SS4A).....	33
State Funding Resources.....	33
Transportation Alternatives (TA) Program.....	33
Enhanced Mobility of Seniors and Individuals with Disability Program.....	33
Rural Surface Transportation Grant.....	33
References.....	34

LIST OF FIGURES

Figure 1: Location of Burton within Washington County and Texas.....	7
Figure 2: Map of Burton, Texas.....	8
Figure 3: Functional Classification System and Hierarchy, FHWA.....	9
Figure 4: Road Classification Examples in Burton, TX.....	10
Figure 5: Road Functional Classifications in Burton, TX.....	11
Figure 6: Annual Average Daily Traffic Volume.....	13
Figure 7: Existing Roadway Conditions and Lack of Sidewalks along Main Street, Burton, Texas.....	14
Figure 8: Residents Utilizing Roadway Shoulders as Sidewalk Along Main Street.....	15
Figure 9: Car Line for School Pickup at Burton Elementary/High Schools.....	15
Figure 10: Crash Density within Burton, Texas.....	17
Figure 11: Crash Severity Explanation.....	18
Figure 12: Crash Severity of the Total Crashes.....	19
Figure 13: TxDOT Projects within Burton, Texas.....	20
Figure 14: N Main Street Section View.....	22
Figure 15: Bypass Route 1 Section View.....	22
Figure 15: Thoroughfare Plan.....	23
Figure 16: High Visibility Crosswalk Recommendations from U.S. Department of Transportation.....	26
Figure 17: Example of lighted pedestrian crossing points, Federal Highway Administration.....	26
Figure 18: Indian Creek Nature Area Walkway From TripAdvisor.....	27
Figure 19: Example of Downtown Wayfinding Signage.....	28
Figure 20: Burton Short Stop located along FM 390, BurtonTexas.org.....	29

LIST OF TABLES

Table 1: Annual Average Daily Traffic Volume..... 12

Table 2: Roads With The Highest Number of Crashes in Burton, TX (2016-2026)..... 16

Table 3: Bypass Route Comparison..... 21

Table 4: Goal One Implementation Table..... 30

Table 5: Goal Two Implementation Table..... 31

Table 6: Goal Three Implementation Table..... 32

SCOPE AND ORGANIZATION OF PLAN

Introduction - Provides an explanation of the local context and intent of this plan.

Existing Conditions - Provides an overview of the City of Burton. Describes the current transportation patterns, hazards, and ongoing efforts within the community.

Planning Process - Outlines the process of gathering community input towards the development of the recommendations.

Recommendations - Details the proposed roadway network and goals as they relate to the needs and desires of the community.

Implementation - Provides the responsible parties, anticipated duration, and potential funding sources of the objectives included in this plan.

LIST OF ACRONYMS

TxTC - Texas Target Communities

TxDOT - Texas Department of Transportation

FHWA - Federal Highway Administration

TCDS - Traffic Count Database System

BTD - Brazos Transit District

FM - Farm to Market

ROW - Right of Way

ISD - Independent School District

TA - Transportation Alternatives

SS4A - Safe Streets and Roads for All

Introduction

The City of Burton is a small, historic rural community in Washington County, Texas, situated along US Highway 290 between Austin and Houston, just 15 minutes west of Brenham (*Figure 1*). The city covers 1.2 square miles and had a population of 297 with a median age of about 59 years old, as of the 2020 decennial census. Historically, the city developed around the railroad and cotton-based agriculture, which is still preserved through museums like the Cotton Gin Museum and the Railroad Depot.

As Burton continues to experience growth, this plan aims to evaluate the current transportation network and provide guidance for its expansion to support future improvements and coordinated development. The assessment includes an analysis of existing conditions, travel patterns, and safety concerns to identify the community's mobility needs and ensure that future growth is supported by appropriate transportation recommendations.

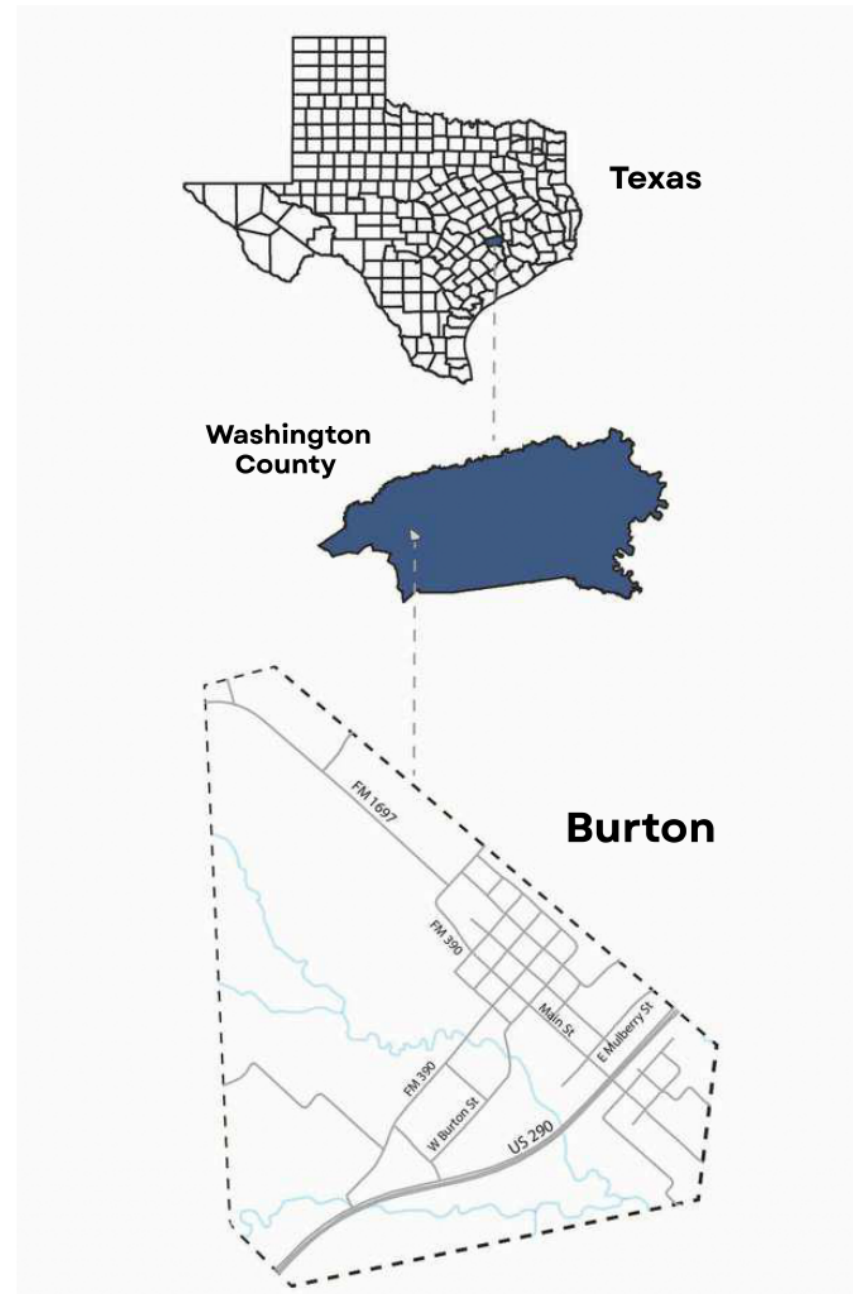


Figure 1: Location of Burton within Washington County and Texas

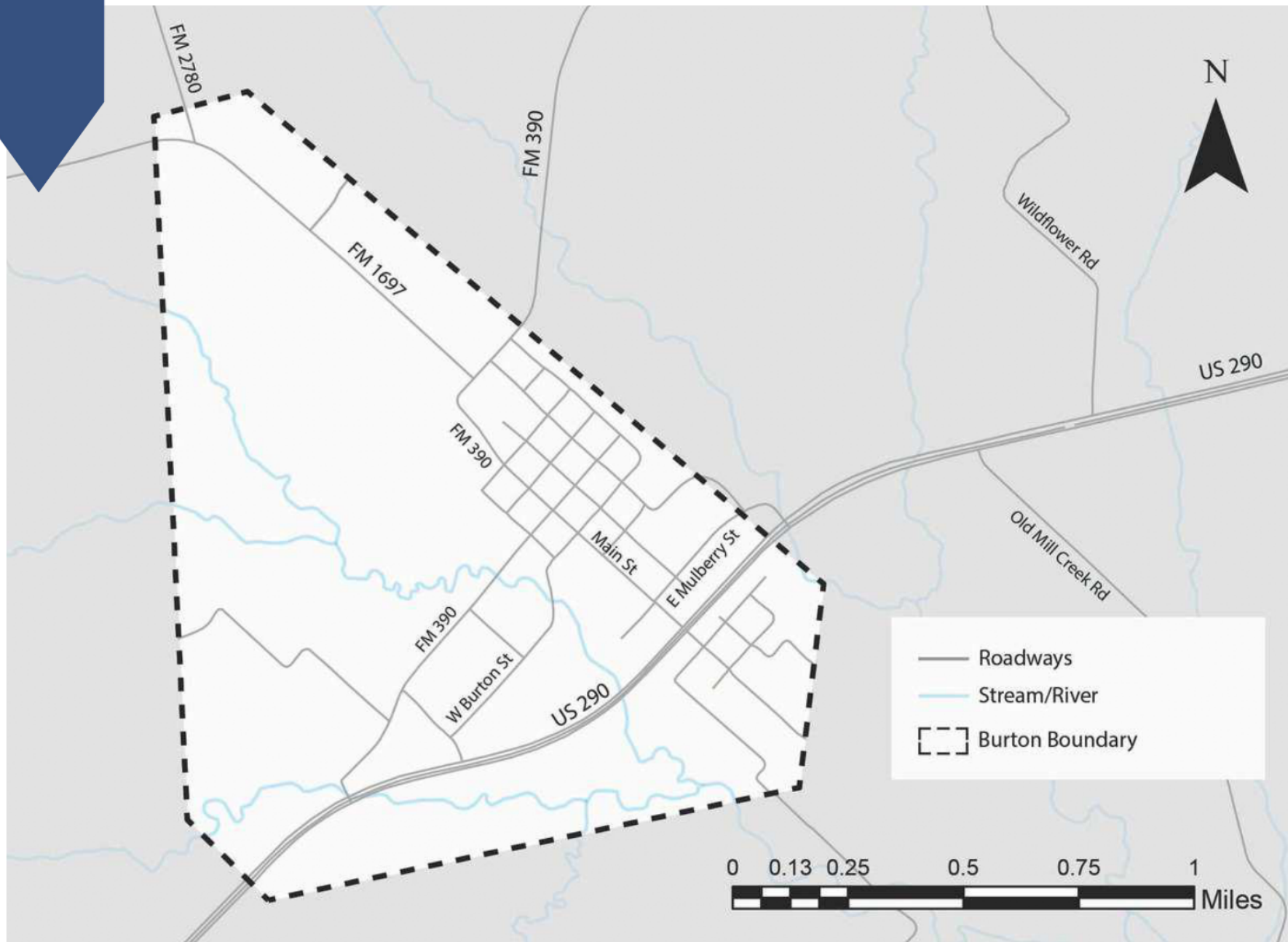


Figure 2: Map of Burton, Texas